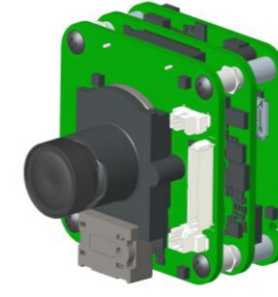


42x42mm IP Camera Module



	Model name	AG4220B1B
Soc Platform	SoC	Ambarella CV28S22m
Image Sensor	Sensor	2M Galaxycore GC2093
Lens	FOV	105°(H), 58.9°(V), 122°(D)
	Aperture	F2.0
	IR CUT	Yes, auto switch via ALS information
Day/Night		Yes, built-in ambient light sensor
Memory	DDR	DDR4 4Gb
	SPI NAND	4Gb
Storage	Internal	Micro-SD card slot
Audio	Compression	G.711
	Microphone	2-way audio D-Mic (Realtek ALC5676) HW only
	Speaker	1 W
Video	Video compression	H.264/H.265
	Frame Rate	1080P@30 fps (50/60Hz)
	Exposure balance	Automatic
	White balance	Automatic
	Infrared mode	Automatic
	Night vision	Built-in IR illuminators, effective up to 10meters
Network	Supported protocol	TCP/IP
	Wireless module	Realtek RTL8733BS, Dual-band WLAN + Bluetooth 5.2 1T1R SDIO 2.0 module
	Support IP addresses	Static and dynamic IP are supported
	Bluetooth	BLE Data
Interface	Micro-SD Card	Yes
	RJ45	N/A
	Button	1pcs for Reset
Indicator LED	RGB	1pc for System power and status indicator & 1pc for color function
IR LED	850nm	up to 10 meters
RTC		Yes
Power		DC 12V±10%
Dimensions		