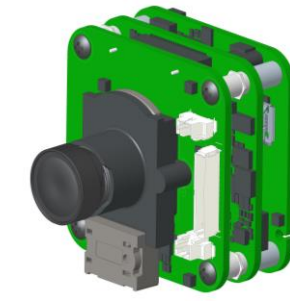




enables your IPC innovation

42x42mm IP Camera Module



	Model name	NG4220B11
Soc Platform	SoC	Novatek NT98560
Image Sensor	Sensor	2M Galaxycore (2.8um/60fps/HDR)
Lens	FOV	D:130°, H:110°, V:57°
	Aperture	F1.6
	IR CUT	Yes, auto switch via ALS information
Day/Night		Yes, built-in ambient light sensor
Memory	DDR	DDR3 4Gb
	SPI NAND	4Gb
Storage	Internal	Micro-SD card slot
Audio	Compression	G.711
	Microphone	2-way audio
	Speaker	0.5W
Video	Video compression	H.264/H.265
	Frame Rate	1080P@30 fps (50/60Hz)
	Exposure balance	Automatic
	White balance	Automatic
	Infrared mode	Automatic
	Night vision	Built-in IR illuminators, effective up to 30meters
Network	Supported protocol	TCP/IP
	Wireless module	Realtek RTL8733BS, Dual-Band 11n (1x1) Solution with BLE5.x
	Support IP addresses	Static and dynamic IP are supported
	Bluetooth	N/A
Interface	Micro-SD Card	Yes
	RJ45	Y cable
	Button	1pcs for Reset
Indicator LED	RGB	1pcs for System power and status indicator
IR LED	850nm	4pcs (up to 30 meters)
RTC		Yes
Power		802.3af Compliant PoE, DC 12V±10%
Dimensions		